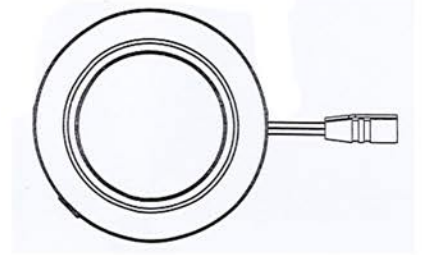


# 1 x ORCA IP44 RATED RECESS/SURFACE LIGHT

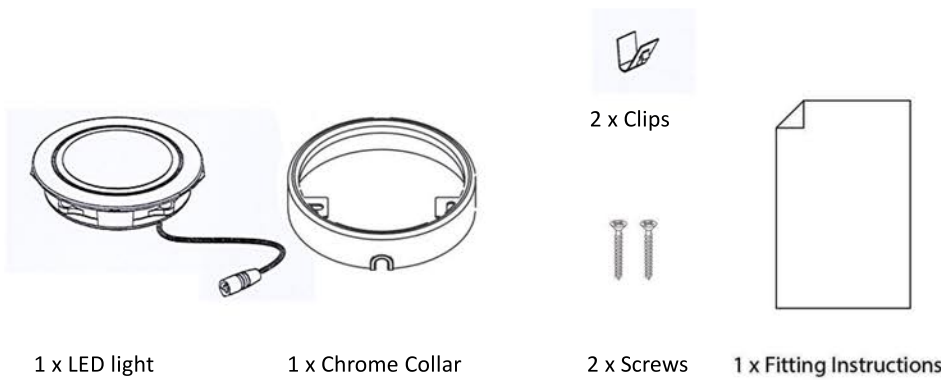


## INSTALLATION INSTRUCTIONS

CODE: SE9006HDCW/SE9006HDWW

**IMPORTANT :** please read these instructions before commencing installation and retain for future reference.

### Components



1 x LED light

1 x Chrome Collar

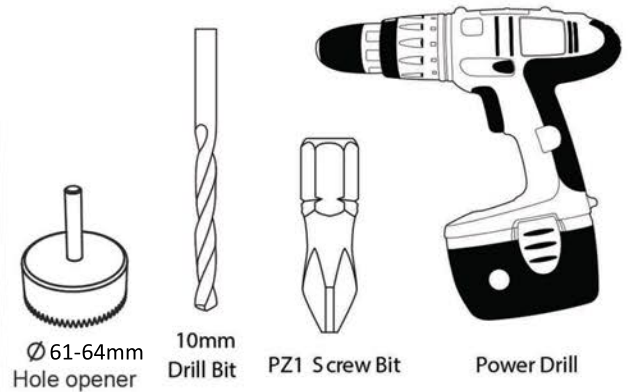
2 x Clips



2 x Screws

1 x Fitting Instructions

### Tools required



Ø 61-64mm  
Hole opener

10mm  
Drill Bit

PZ1 Screw Bit

Power Drill

### Important safety information

Please read these instructions carefully before attempting to install this product. It is advisable to keep these instructions in a safe place for further reference.

We recommend that you consult a qualified electrician. All electrical installations must be carried out in accordance with current IEE wiring regulations (BS7671).

These products must not be modified, if any modifications are made, it may invalidate the warranty and may render the product unsafe.

Do not wire the individual LED light fittings directly to the mains. This product is for indoor use only.

- If in doubt installation must be carried out by a qualified electrician.
- Install on smooth flat surface(s) only.
- The Wattage of each fitting is 1.65W. Make sure that the LED driver used with these fittings has an adequate max wattage.

| Model      | Rated Input | Rated Load | ta       | IP   |
|------------|-------------|------------|----------|------|
| SE9006HDCW | 24VDC       | 1.65W      | -20~35 C | IP44 |
| SE9006HDWW | 24VDC       | 1.65W      | -20~35 C | IP44 |

### Safety instructions

1. Before commencing installation or maintenance, isolate the main electrical supply for the appropriate circuit at the fuse board.
2. This product requires an LED driver.
3. The light should be mounted onto a secure surface.
4. Suitable for furniture lighting.
5. When the lamp expires the fitting must be replaced.

Waste Electrical & Electronic Equipment (WEEE)

The Symbol on the product, or on the document accompanying the product, the crossed out wheellie bin symbol, indicated that this product may not be treated as household waste. Instead it shall be handed over to the applicable collection point for the recycling of electrical and electronic waste.

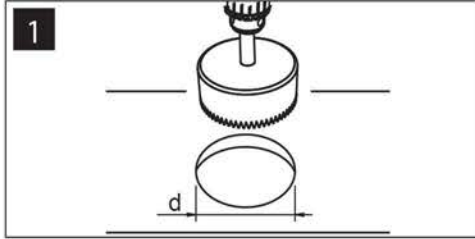


RoHS  
Compliant ✓

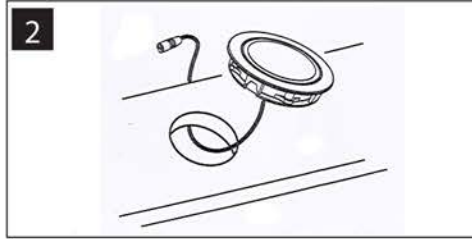


**Installation**

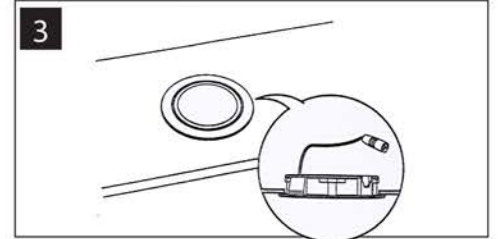
**A RECESSING** Installation for board thickness  $\leq 1.2\text{mm}$  (0.047")



Drill an installation hole of  $\varnothing 61\text{mm}$ .

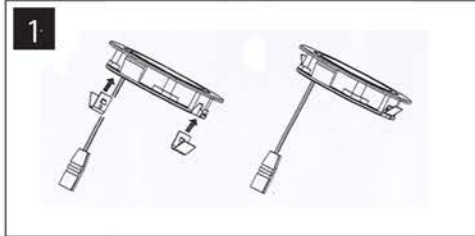


Feed the attached cable through the cut hole and fix the recessed light into place.

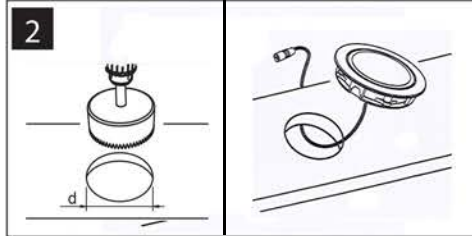


The plug connected to the end of the cable is then to be plugged into the LED driver. Do not exceed driver wattage.

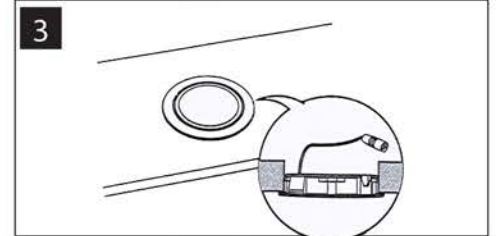
**B RECESSING** Installation for board thickness  $\geq 1.3\text{mm}$  (0.051")



Attach the clips to the fitting as shown above.

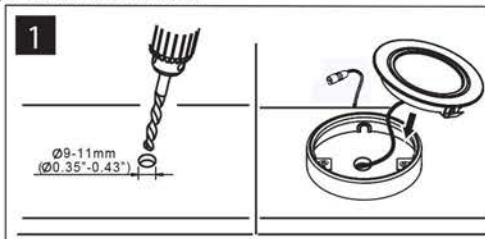


Drill an installation hole of  $\varnothing 62\text{-}64\text{mm}$ . Feed the attached cable through the cut hole and fix the recessed light into place.

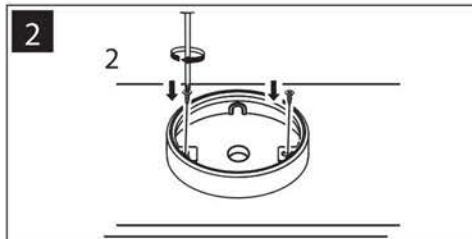


The plug connected to the end of the cable is then to be plugged into the LED driver. Do not exceed driver wattage.

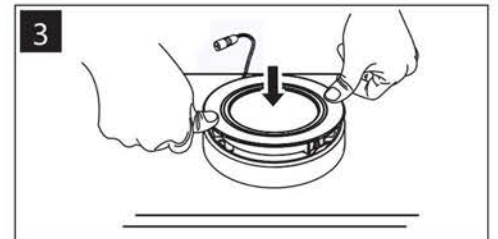
**C SURFACE MOUNTING**



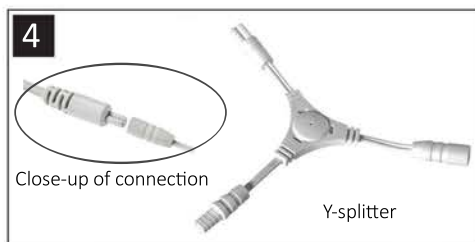
Create an access hole of  $10\text{mm}$   $\varnothing$  to feed the cable through.



Fix the collar to the unit using 2 fixing screws.



Push the lamp back into the collar as before



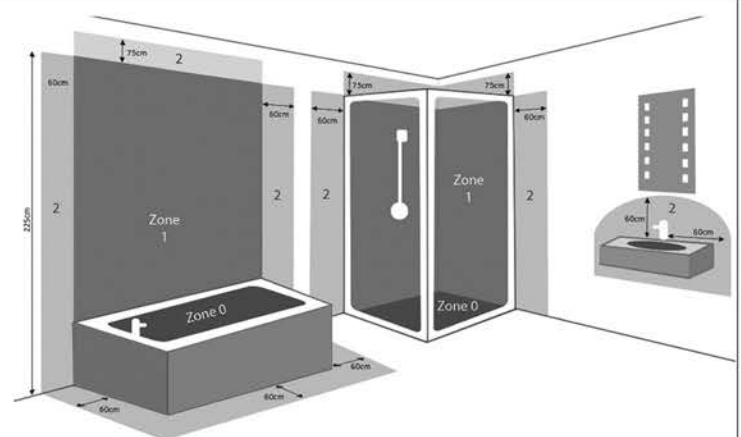
Close-up of connection

Y-splitter

Finally, plug the light to the IP44 driver (SE40560) - close-up shown above. Then connect the driver to the mains supply. When connecting more than one light fitting to the driver use the IP44 rated Y-Splitter (SE10345) also shown above.

**ZONE**

- 0** Inside the bath or shower. Must be SELV (12V max.) due to water submersion. Minimum rating of IP67.
- 1** 225cm above the bath or shower. Minimum rating of IP44.
- 2** The area stretching to 60cm outside the bath or shower and 60cm from water outlet of sink. An IP rating of at least IP44 is required.



**OUTSIDE ZONES.** Anywhere outside zones 0, 1 & 2. Where water jets are not used for cleaning purposes, the general rules of BS7671 apply.

**Maintenance & Care**

- Ensure that the power is disconnected prior to cleaning.
- To keep the finish of this product, wipe over with soft cloth periodically.
- Do not use harsh chemical solvents, it may dis-colour or damage the finish.

Sensio House, Unit 7 Speedwell Road, Castleford, West Yorkshire, WF10 5PY.

[www.sensio.co.uk](http://www.sensio.co.uk)

Technical drawings for illustration purposes only, Sensio has the right to change any information without prior notice. Make sure you check all hole cut outs before work commences.